

# Clarke®



## GAS HEATER MODEL NO: DEVIL 500

PART NO: 6950022

## USER INSTRUCTIONS

UK  
CA | CE



ORIGINAL INSTRUCTIONS

DL0525

---

## INTRODUCTION

---

Thank you for purchasing this CLARKE Gas Powered Heater.

Before attempting to use this product, please read this manual thoroughly and follow the instructions carefully. In doing so you will ensure the safety of yourself and that of others around you, and you can look forward to your purchase giving you long and satisfactory service.

---

## GUARANTEE

---

This product is guaranteed against faulty manufacture for a period of 12 months from the date of purchase. Please keep your receipt which will be required as proof of purchase.

This guarantee is invalid if the product is found to have been abused or tampered with in any way, or not used for the purpose for which it was intended.

Faulty goods should be returned to their place of purchase, no product can be returned to us without prior permission.

This guarantee does not effect your statutory rights.

---

## ENVIRONMENTAL RECYCLING POLICY

---



Through purchase of this product, the customer is taking on the obligation to deal with the WEEE in accordance with the WEEE regulations in relation to the treatment, recycling & recovery and environmentally sound disposal of the WEEE.

In effect, this means that this product must not be disposed of with general household waste. It must be disposed of according to the laws governing Waste Electrical and Electronic Equipment (WEEE) at a recognised disposal facility.

## THE FOLLOWING TABLE ADDRESSES THE INFORMATION REQUIREMENTS OF REG.2015/1188

Contact Details: Clarke International Ltd, Hemnall St, Epping, Essex, CM16 4LG

Tel: 0208 988 7400 Web: [www.clarkeinternational.com](http://www.clarkeinternational.com)

Model Number	<b>DEVIL 500</b>		
Indirect Heating Functionality	No		
Direct Heat Output	10kW		
Indirect Heat Output	N/A		
Minimum permissible total flue length (vertical + horizontal)	N/A		
<b>Fuel</b>	Nitrogen oxides (NO <sub>x</sub> ) Emissions		
	<b>Value</b>	<b>Unit</b>	
Select Fuel Type: Gaseous (Propane)	116	mg/kWh input (GCV)	
<b>Item</b>	<b>Symbol</b>	<b>Value</b>	<b>Unit</b>
<b>Heat output</b>			
Nominal heat output	P <sub>nom</sub>	10	kW
Minimum heat output	P <sub>min</sub>	N/A	kW
<b>Auxiliary electricity consumption</b>			
At nominal heat output	e <sub>lmax</sub>	0.0	kW
At minimum heat output	e <sub>l min</sub>	N/A	kW
<b>Power consumption</b>			
In off mode	P <sub>0</sub>	0.00	W
In standby mode	P <sub>sm</sub>	0.00	W
In idle mode	P <sub>idle</sub>	N/A	W
In networked standby mode	P <sub>nsm</sub>	N/A	W
Standby mode with display of information or status			No
<b>Permanent pilot flame power requirement</b>			
Pilot flame power requirement (if applicable)	P <sub>pilot</sub>	N/A	kW
<b>Efficiency (NCV)</b>			
Useful efficiency at nominal heat output	η <sub>th,nom</sub>	100.0	%
Useful efficiency at minimum heat output	η <sub>th, min</sub>	N/A	%
Seasonal space heating energy efficiency	P <sub>nom</sub>	75.0	%

<b>Type of heat output/room temperature control (select one)</b>	
Single stage heat output, no temperature control	Yes
Two or more manual stages, no temperature control	No
With mechanical thermostat temp control	No
With electronic temperature control	No
Electronic temperature control with day timer	No
Electronic temperature control with week timer	No
<b>Other control options (multiple selections possible)</b>	
Room temperature control with presence detection	No
Room temperature control with open window detection	No
Room temperature control with distance control option	No
Room temperature control with adaptive start control	No
Room temperature control with working time limitation	No
Room temperature control with black bulb sensor	No
Room temperature control with self-learning functionality	No
Room temperature control with control accuracy	No

---

## FUNCTION AND OPERATING PARAMETERS

---

This is a gas powered heater. It's intended use is for drying and the warming of commercial/industrial buildings where adequate ventilation is provided.

- It must be operated as prescribed in the operating manual.
- It is not intended to be used for domestic use or for the heating of habitable areas.
- It is not intended to be used to reach and maintain a certain level of human thermal comfort within an enclosed space in which the heater is situated.
- It is not intended to be used in enclosed areas with restricted ventilation.
- It is not for use in areas with high levels of fluctuating drafts.
- **DO NOT** use for warming animals or live stock.

---

## SAFETY INFORMATION

---

Read, and make sure you fully understand the following precautions and the hazards associated with this type of equipment.

1. **ONLY** use with the voltage specified and ensure the heater is properly earthed.
2. Use only the hose and factory preset regulator provided with the heater.
3. **ONLY** use propane gas, set up for vapour withdrawal.
4. Use only in well ventilated areas. Provide ventilation of at least 1ft<sup>2</sup>/1000cm<sup>2</sup> opening of fresh outside air.
5. **DO NOT** use this heater in small rooms when they are occupied by persons not capable of leaving the room on their own unless constant supervision is provided.
6. For indoor use only. **DO NOT** use heater outdoors.
7. **DO NOT** use this heater in the immediate surrounds of a bath, a shower or a swimming pool
8. **DO NOT** use for the heating of habitable areas of domestic premises; for use in public buildings, refer to national regulations.
9. **DO NOT** use the heater in a basement or below ground level. Propane gas is heavier than air. If a leak occurs. propane gas will sink to the lowest possible level.
10. Keep the heater area clear and free from combustible materials, gasoline, paint thinner and other flammable vapours and liquids. For minimum safe clearance limits, see page 13.
11. **DO NOT** use heater in areas with high dust content. Dust is combustible.
12. **DO NOT** point the heater at the propane tank.
13. Keep propane tank(s) below 100°F (37.8°C).
14. Check the heater for damage before each use. **DO NOT** use if dropped. **DO NOT** use a damaged heater.
15. Check the hose before each use of the heater. If highly worn or cut, replace with hose specified by the manufacturer before using the heater.
16. Locate the heater on a stable and level surface if the heater is hot or operating.
17. Not intended for use on finished floors.
18. **NEVER** block the air inlet (rear) or air outlet (front) of the heater.
19. **DO NOT** cover the heater while in use.
20. Keep the heater away from strong drafts, water spray, rain or dripping water.
21. **DO NOT** leave the heater unattended.
22. **NEVER** move, handle or service a hot, operating or plugged-in heater.

23. To prevent injury wear gloves when handling the heater.
24. **NEVER** attach duct work to front or rear of the heater.
25. **DO NOT** alter the heater. Keep the heater in its original state. If the heater has been altered in any way, **DO NOT** use.
26. Turn off the propane supply and unplug the heater when not in use.
27. Use only original replacement parts. This heater must use design-specific parts. Improper replacement parts could be highly dangerous.
28. **DO NOT** place torsional stress on any hoses or cables.
29. **DO NOT** use this heater with a programmer, timer, separate remote control system or any other device that switches the heater on automatically, since a fire risk exists if the heater is covered or positioned incorrectly.
30. This heater is only intended for use in industrial, commercial and building industries, it is **NOT** to be used by children or persons with reduced physical, sensory or mental capabilities, or lack of experience and knowledge.
31. Keep all children and animals away from the heater.
32. **DO NOT** use for warming animals or live stock.
33. Children should **NOT** play with the appliance.
34. **BYSTANDERS:** When the heater is to be operated in the presence of other people the user is responsible for informing those present of the safety precautions and of the hazards involved.

---

## SAFETY SYMBOLS

---

Please read all of the safety and operating instructions carefully before using this product. The following safety symbols may be found on the product.

	<b>GENERAL HAZARD WARNING</b>		<b>HOT SURFACE, DO NOT TOUCH</b>
	<b>ALWAYS READ THIS MANUAL BEFORE USE</b>	 <b>DO NOT COVER</b>	<b>DO NOT COVER</b>

---

## GENERAL PRECAUTIONS

---

Even though this heater operates very close to 100 percent combustion efficiency, it still produces small amounts of carbon monoxide.

- Carbon Monoxide (CO) is toxic.
- Pregnant women, persons with a heart or lung condition, anemia or under the influence of alcohol, or those at high altitude, are more likely to be effected by Carbon Monoxide.
- CO can build up in a confined space and failure to provide adequate ventilation can be fatal.

The early symptoms of asphyxiation caused by inadequate ventilation are:

- headache
- nausea
- dizziness
- dry mouth or sore throat

Should anyone show these symptoms, they must **GET FRESH AIR IMMEDIATELY**. Turn off the heater and have it serviced before using again.

Be sure to follow all warnings in this manual.

**WE RECOMMEND THE USE OF A CARBON  
MONOXIDE DETECTOR**

# ELECTRICAL CONNECTIONS




**WARNING! Read these electrical safety instructions thoroughly before connecting the product to the mains supply.**

Before switching the product on, make sure that the voltage of your electricity supply is the same as that indicated on the rating plate. This product is designed to operate on 230VAC 50Hz. Connecting it to any other power source may cause damage.

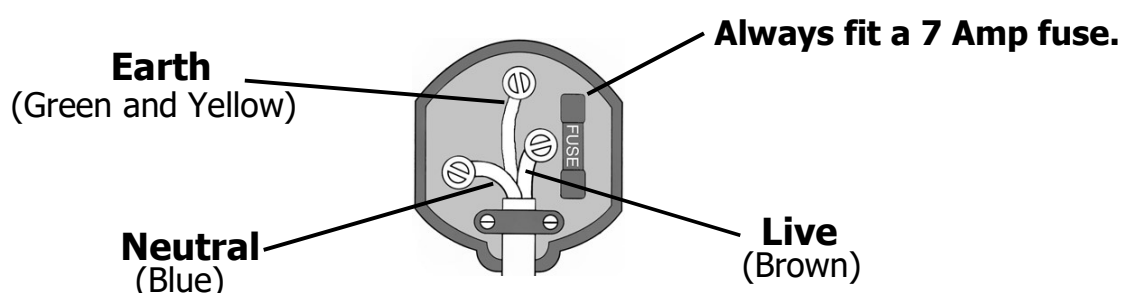
This product may be fitted with a non-rewireable plug. If it is necessary to change the fuse in the plug, the fuse cover must be refitted. If the fuse cover becomes lost or damaged, the plug must not be used until a suitable replacement is obtained.

If the plug has to be changed because it is not suitable for your socket, or due to damage, it should be cut off and a replacement fitted, following the wiring instructions shown below. The old plug must be disposed of safely, as insertion into a mains socket could cause an electrical hazard.

If the colours of the wires in the power cable of this product do not correspond with the markings on the terminals of your plug, proceed as follows.

- The wire which is coloured **Blue** must be connected to the terminal which is marked **N** or coloured **Black**.
- The wire which is coloured **Brown** must be connected to the terminal which is marked **L** or coloured **Red**.
- The wire which is coloured **Yellow and Green** must be connected to the terminal which is marked **E** or  or coloured **Green**.

**Plug must be BS1363/A approved.**



**Ensure that the outer sheath of the cable is firmly held by the clamp**

We strongly recommend that this machine is connected to the mains supply via a Residual Current Device (RCD)

If in any doubt, consult a qualified electrician. **DO NOT** attempt any repairs yourself.



---

## UNPACKING

---

When unpacking, check the heater for possible shipping damage. Should any damage be apparent, please notify your CLARKE dealer immediately. Your heater is fully assembled, only the electrical and gas supplies need connecting.

---

## THEORY OF OPERATION

---

**THE FUEL SYSTEM:** The hose/regulator assembly attaches to the propane gas supply. This provides fuel to the heater.

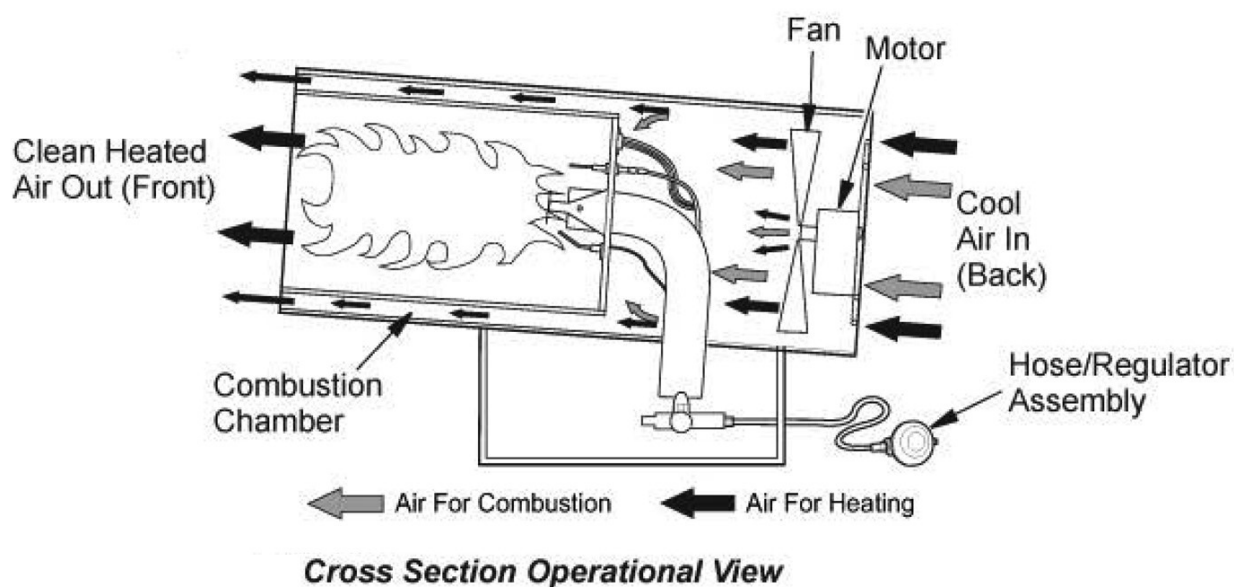
**THE AIR SYSTEM:** The motor turns the fan. The fan pushes air into and around the combustion chamber. This air is heated and provides a stream of clean, hot air.

**THE IGNITION SYSTEM:** The Piezo igniter lights the burner.

**THE AUTOMATIC CONTROL SYSTEM:** Should the flame extinguish for any reason, the thermocouple will quickly cool, causing the Flame Failure valve to close, shutting off the gas supply.

Similarly, should there be a power failure, the safety shut off valve (solenoid) will shut off the gas supply.

The machine is also fitted with a thermal overload protection, which will operate should the unit overheat, shutting off the gas supply to the heater.



# PROPANE GAS SUPPLY

These heaters are designed for use with **PROPANE GAS ONLY**. Gas cylinders are not supplied, but are readily available from builders merchants or gas suppliers etc.

As with all mechanical equipment, optimum performance will only be achieved if the correct operation and servicing procedures are followed.



**WARNING: PROPANE GAS CYLINDERS MUST BE USED AND STORED IN ACCORDANCE WITH THE HIGHLY FLAMMABLE LIQUIDS AND LIQUEFIED PETROLEUM GASES REGULATIONS 1972'**

## GAS CONNECTION

Connect the free end of the gas hose to the gas inlet connection on the heater and tighten to ensure there are no gas leaks. Before attaching the regulator to the gas cylinder, ensure the mating parts are free from grease and dirt and are undamaged.

Fit the regulator to the cylinder, tightening the thread as tight as possible with a propane spanner, noting that the threads are LEFT HANDED. To check for leaks, use soapy water or liquid soap applied to each of the connections. Any bubbles formed indicate a leak. Correct all leaks immediately.

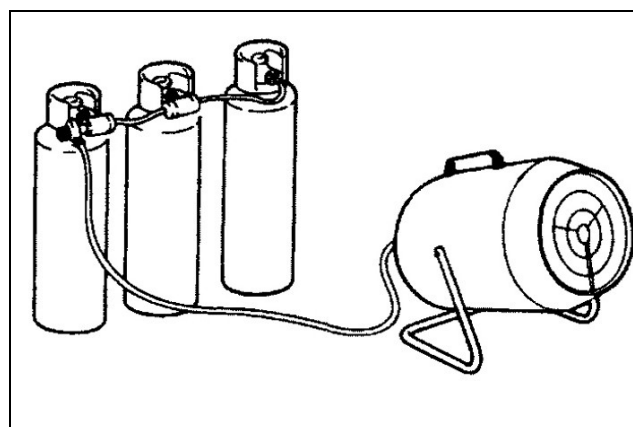
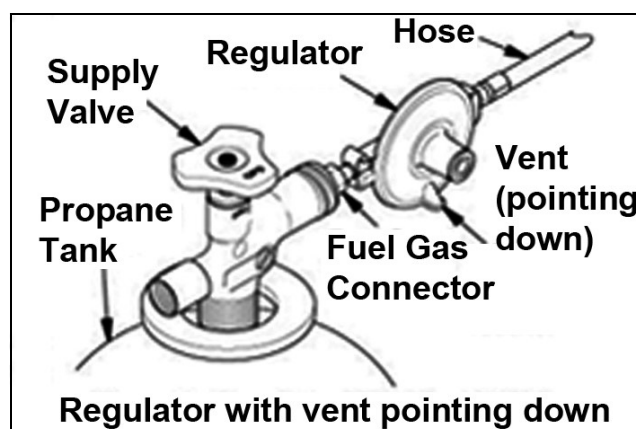
**IMPORTANT: The gas hose and cylinder must ALWAYS be located well behind the heater.**

In order to reduce the risk of icing up when operating at long periods at maximum capacity, you should use a larger capacity gas bottle, or two/three bottles in parallel, as shown.

- The 'Tee' piece and 'pigtailed' are readily available from your builders merchants or gas supplier.

## CHANGING GAS BOTTLES

1. Turn off the heater and disconnect from the electrical supply.
2. Close the gas valve on the bottle and unscrew the regulator, (left hand thread).
3. Ensure the replacement bottle screw threads and gas orifice are perfectly clean before screwing in the regulator valve tightly.



4. Check to ensure there are no leaks using soapy water and when satisfied, plug in to the electrical supply and restart the heater.

---

## IN THE EVENT OF A GAS LEAK

---

1. Put out all smoking materials and other open flames.
2. **DO NOT** operate electric switches or light matches.
3. Close all supply valves on gas tank or cylinder.
4. **DO NOT** use your phone. USE a neighbour's phone or your mobile phone from outside the building or wherever you detected the gas leak to call the fire service.
5. Immediately get everyone out of the building or area.
6. **DO NOT** re-enter the building or area until a trained service person or the fire service advises it is safe to return.

# INSTALLATION



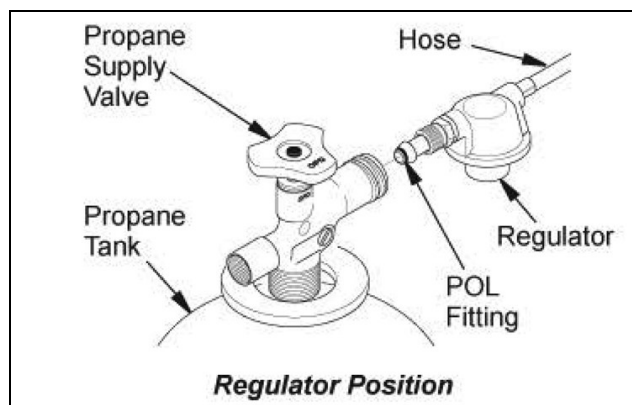
**WARNING: READ AND UNDERSTAND THE WARNINGS IN THE SAFETY INFORMATION SECTION, PAGE 5. THEY ARE NEEDED TO SAFELY OPERATE THIS HEATER. FOLLOW ALL LOCAL REGULATIONS WHEN USING THIS HEATER.**



**WARNING: TEST ALL GAS PIPING AND CONNECTIONS FOR LEAKS AFTER INSTALLATION OR SERVICING. NEVER USE AN OPEN FLAME TO CHECK FOR A LEAK. APPLY A MIXTURE OF LIQUID SOAP AND WATER TO ALL JOINTS. BUBBLES FORMING SHOW A LEAK. CORRECT ALL LEAKS AT ONCE.**

1. Provide a propane supply system (see Propane Gas Supply on page 10).
2. Connect POL (Prest-o-Lite) fitting on hose/regulator assembly to the propane tank(s).
  - Turn POL fitting anti-clockwise into the threads on the tank. Tighten firmly using a wrench.

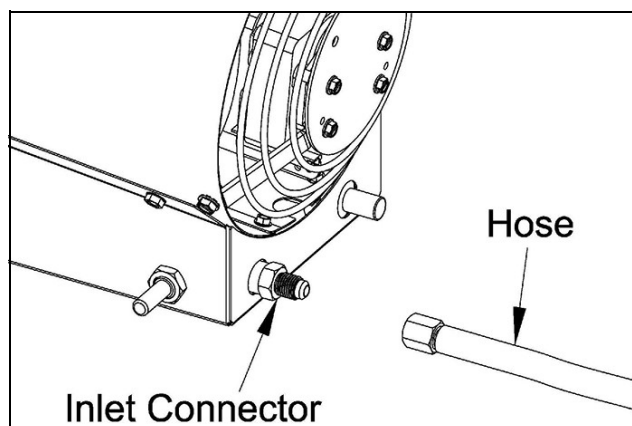
***IMPORTANT: Position the regulator so that the hose leaving the regulator is in a horizontal position. This places the regulator vent in the proper position to protect it from the weather.***



3. Connect the hose to the valve inlet connector. Tighten firmly using a wrench.

***IMPORTANT: Use extra hose or piping if needed between hose/regulator assembly and propane tank. You must use the regulator supplied with heater.***

4. Open the propane supply valve on the propane tank(s) slowly.



**NOTE:** If the supply valve is not opened slowly, the check valve on the propane tank will activate and stop gas flow. If this happens, close the propane supply valve and open again slowly.

5. Check all connections for leaks. Apply a mixture of liquid soap and water to all gas joints. Bubbles forming show a leak that must be corrected.
6. Close the propane supply valve.

---

## OPERATING SPACE AND AIR SUPPLY

---

### MINIMUM FRESH AIR OPENING REQUIREMENTS

These heaters are specified as having a minimum fresh air opening requirement of 1000cm<sup>2</sup>.

### OPERATING SPACE

**DO NOT** obstruct the air intake to the heater and allow the following clearances from combustible surfaces.

Outlet (Front): 6 feet (1.8 m)

Sides: 6 feet (1.8 m)

Top: 6 feet (1.8 m)

Inlet (Rear): 2 feet (0.6 m)

Keep the heater as far as practical from propane tanks and **NEVER** point the heater directly at any propane tank.

---

# STARTING PROCEDURE

---



**WARNING: BEFORE STARTING THE HEATER, YOU MUST ENSURE THAT THE MINIMUM VENTILATION REQUIREMENTS ARE OBSERVED TO AVOID THE RISK OF CARBON MONOXIDE POISONING.**

---

## TO START THE HEATER

1. Follow all installation, ventilation, and safety information.
2. Locate the heater on stable and level surface.
  - Make sure strong drafts do not blow into the front or rear of the heater.
3. Plug the heater into a suitable 230V mains socket.
4. Set the on/off switch to the on position.
  - The motor will start, the fan will turn, forcing air from the front of the heater.
5. Open the propane supply valve on the propane tank(s) slowly.

**NOTE:** If not opened slowly, the excess-flow check valve on the propane tank will stop the gas flow. If this happens, close the propane supply valve and open again slowly.

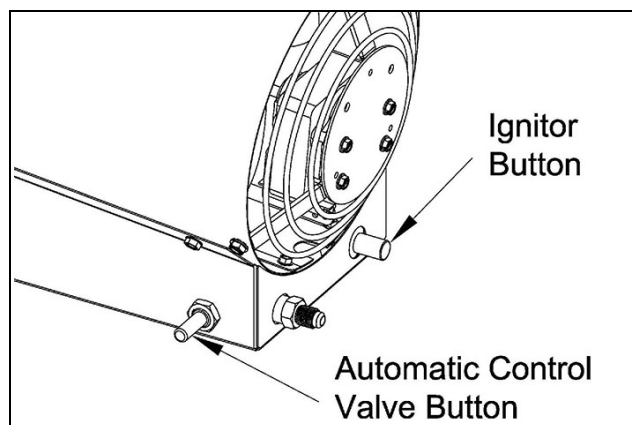
---



**WARNING: MAKE SURE THAT THE MOTOR AND FAN ARE RUNNING BEFORE PUSHING IN AUTOMATIC CONTROL VALVE BUTTON. FLAMES COULD FLASH OUTSIDE HEATER IF THE MOTOR AND FAN ARE NOT RUNNING.**

---

6. Push in and hold the automatic control valve button.
7. Push the Piezo igniter button.
  - You may need to push the Piezo igniter button 3-8 times until the burner lights.
  - When the burner lights, keep the automatic control valve button pushed in.



8. Release the automatic control valve button after 15 seconds.

**NOTE:** If the heater fails to ignite, the hose may have air in it. If so, keep the automatic control valve button pressed and wait 20 seconds. Release the automatic control valve button and wait 20 seconds for unburned fuel to exit the heater, repeat steps 6-8.

---

## **STOPPING PROCEDURE**

---

### **TO STOP THE HEATER**

1. Tightly close propane supply valve on propane tank(s).
  - The heater will burn away gas left in supply hose.
2. Allow the heater to cool down for 5 minutes, then switch off the heater.
3. Unplug the heater.

### **TO RESTART THE HEATER**

1. Wait five minutes after stopping the heater.
2. Repeat steps under 'To Start The Heater'.

### **AUTOMATIC SAFETY FEATURES**

This heater has the following safety features that will automatically shut down the heater if they are activated:

1. Thermal Cut Out.
2. Flame Out.
3. Solenoid Valve.

If any of these features are activated, let the heater cool down for 5 minutes before trying to restart the heater.

---

## STORAGE

---



**CAUTION: DISCONNECT THE HEATER FROM PROPANE SUPPLY TANK(S) WHEN PUTTING THE HEATER INTO STORAGE**

---

1. Store propane tank(s) in safe manner.
    - Follow all local regulations.
    - Always store propane tanks outdoors.
  2. Place plastic cover caps over any brass fittings, the connector and hose/regulator assembly.
  3. Store in a dry, clean and safe place.
  4. When taking heater out of storage, always check inside of heater. Insects and small animals may place foreign objects in heater.
- 

## MAINTENANCE

---



**WARNING: NEVER SERVICE THE HEATER WHILE IT IS PLUGGED IN, CONNECTED TO THE PROPANE SUPPLY, OPERATING OR HOT. SEVERE BURNS OR ELECTRIC SHOCK MAY OCCUR.**

**WARNING: KEEP THE HEATER CLEAR AND FREE FROM ANY COMBUSTIBLE MATERIALS, GASOLINE AND OTHER FLAMMABLE VAPOURS AND LIQUIDS.**

**WARNING: DO NOT BLOCK THE FLOW OF COMBUSTION OR VENTILATION AIR.**

---

1. Keep heater clean. Clean heater annually or as needed to remove dust and debris. If heater is dirty or dusty, clean heater with a damp cloth.
2. Inspect the heater before each use. Check connections for leaks. Apply mixture of liquid soap and water to connections. Bubbles forming show a leak. Correct all leaks at once.
3. Inspect the hose/regulator assembly before each use. If the hose is highly worn or cut, replace with a hose specified by the manufacturer.
4. Have heater inspected yearly by a qualified service agency.
5. Keep the inside of the heater free from combustible and foreign objects.



# TROUBLESHOOTING



**WARNING: NEVER SERVICE THE HEATER WHILE IT IS PLUGGED IN, CONNECTED TO PROPANE SUPPLY, OPERATING OR HOT. SEVERE BURNS AND ELECTRICAL SHOCK CAN OCCUR.**

OBSERVED FAULT	POSSIBLE CAUSE	REMEDY
Fan does not turn on when heater is plugged in	No electrical power to the heater	Check voltage to electrical outlet. If voltage is good, check heater power cable for breaks
	Structural damage	Return to your dealer for repair.
	Defective motor	Return to your dealer for repair.
Heater will not ignite	User did not follow installation or operation instructions properly	Repeat installation and operation instructions. See Installation and Starting, page 12-15
	<p>No spark at igniter. If no spark seen, the fault may be:</p> <p>A) Loose or disconnected igniter wire</p> <p>B) Wrong spark gap</p> <p>C) Piezo igniter loose</p> <p>D) Bad igniter electrode</p>	<p>A) Check igniter wire. Tighten or reattach loose igniter wire.</p> <p>B) Set gap between igniter electrode and target plate to 0.17" (0.43 cm)</p> <p>C) Tighten nut holding Piezo igniter to base of heater</p> <p>D) Replace igniter electrode.</p> <p>If you see a spark at the igniter have the heater serviced by a qualified service person.</p>

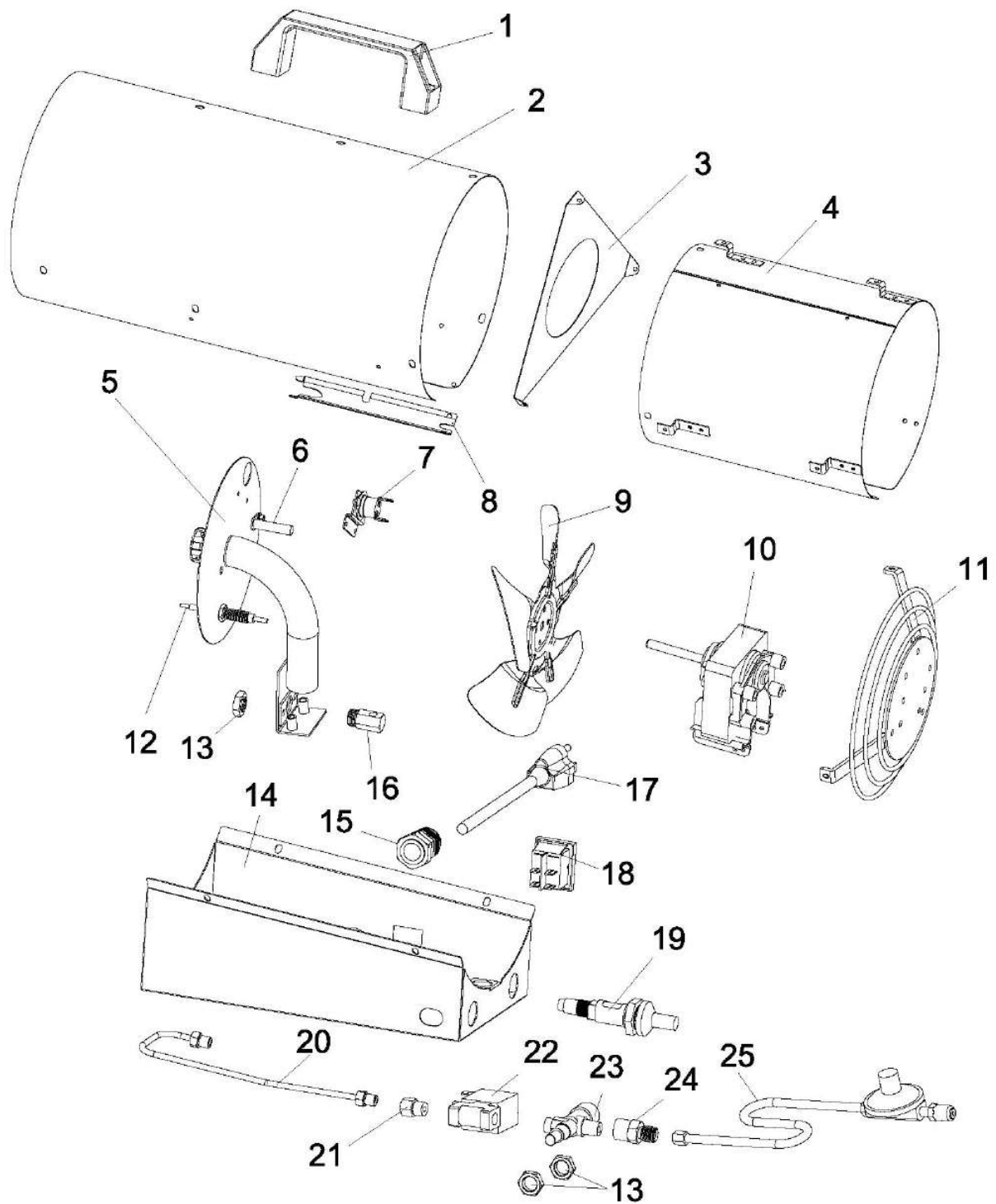
OBSERVED FAULT	POSSIBLE CAUSE	REMEDY
Heater shuts down while running	High surrounding air temperature causing thermal limit device to shut down heater	This can happen when running heater in temperatures above 85°F. Only run the heater in cooler temperatures
	Restricted air flow	Check heater inlet and outlet. Remove any obstructions

## SPECIFICATIONS

Model Number	DEVIL 500
Dimensions (L x W x H) mm	378x185x275
Weight	4.2kg
Fuse Rating	7A
Operating Voltage	230V/50Hz
Rated Input Power	35W
Rated Input Current	315mA
Electrical Insulation Class	I
Energy Efficiency Class	D
RPM (@230V@No Load)	2900
Duty Cycle	S1 (Continuous)
IP Rating	IPX0
Hose Length	1.5m
Regulator	M30-700
Fuel	Propane
Ignition System	Piezo
Regulator Gas Flow Rate (kg/hr)	2
Gas Consumption (kg/hr)	0.704
Air Flow (m3/hr)	170
Gas Pressure (max)	700mBar
Rated Heat Output (kW/btu per hour)	10/34,121

Please note that the details and specifications contained herein are correct at the time of going to print. However CLARKE International reserve the right to change specifications at any time without prior notice. **ALWAYS** consult the heater's data plate.

# PARTS DIAGRAM



## PARTS LIST

No	Description
1	Handle
2	Outer Cylinder
3	Front Guard
4	Middle Cylinder Assembly
5	Burner
6	Electrode Igniter
7	High Limit Control
8	Fire Damper Board
9	Fan
10	Motor
11	Inlet Grille
12	Thermocouple
13	Nut

No	Description
14	Control Box
15	Strain Relief Bush
16	Nozzle
17	Power Cable
18	Power Switch
19	Piezo Igniter
20	Fuel Tube Assembly
21	Extension Fitting
22	Solenoid Valve Assembly
23	Gas Valve
24	Regulator Connector
25	Hose/Regulator Assembly

# DECLARATION OF CONFORMITY - UKCA



## DECLARATION OF CONFORMITY


This is an important document and should be retained.

We hereby declare that this product(s) complies with the following legislation: The following standards have been applied to the product(s):

2016/426	Gas Appliance Regulation	EN 61000-3-3:2013+A1:2019+A2:2021, EN IEC 60335-2-102:2024+A11:2024, EN 62233:2008,
2009/125/EC	Ecodesign Directive	IEC 62321-4:2013, IEC 62321-5:2013, IEC 62321-6:2015, IEC 62321-8:2017, EN 16129:2013,
2014/30/EU	Electromagnetic Compatibility Directive	EN 60335-1:2012+A11:2014+A13:2017+A1:2019+A2:2019+A14:2019+A15:2021+A16:2023,
2014/35/EU	Low Voltage Directive	EN IEC 61000-3-2:2019+A1:2021+A2:2024, EN IEC 55014-1:2021, EN IEC 55014-2:2021,
2011/65/EU	Restriction of Hazardous Substances (RoHS) Directive	EN 1596:1998/A1:2004, IEC 62321-3-1:2013, IEC 62321-7-1:2015, IEC 62321-7-2:2017

This declaration is issued, in accordance with legislation (EU) 2016/426, under the sole responsibility of the manufacturer.

The UKCA mark was first applied in: 2025

<b>Manufacturer:</b>	Clarke International Ltd, Hemmell Street, Epping, Essex, CM16 4LG, United Kingdom	<b>Notified Body:</b>	DBI Certification A/S (ID Number: 2531), Jernholmen 12, DK-2650 Hvidovre, Denmark
<b>Product Description:</b>	Gas Space Heater	<b>GAR Certificate Number:</b>	2531-GAR-CGC10360, 2531-GAR-CGC10088
<b>Model Number(s):</b>	DEVIL 500	<b>GAR Certificate Issue:</b>	07/12/2022, 19/04/2023
<b>Serial/Batch Number:</b>	Refer to product/packaging label	<b>GAR Certificate Expiry:</b>	13/06/2028, 21/04/2028
<b>Date of Issue:</b>	21/03/2025	<b>Signed:</b>	 J.A. Clarke Director

# DECLARATION OF CONFORMITY - CE

CE

**Clarke**  
INTERNATIONAL

## DECLARATION OF CONFORMITY

This is an important document and should be retained.

We hereby declare that this product(s) complies with the following legislation: The following standards have been applied to the product(s):

2016/426	Gas Appliance Regulation	EN 61000-3-3:2013+A1:2019+A2:2021, EN IEC 60335-2-102:2024+A11:2024, EN 62233:2008,
2009/125/EC	Ecodesign Directive	IEC 62321-4:2013, IEC 62321-5:2013, IEC 62321-6:2015, IEC 62321-8:2017, EN 16129:2013,
2014/30/EU	Electromagnetic Compatibility Directive	EN 60335-1:2012+A11:2014+A13:2017+A1:2019+A2:2019+A14:2019+A15:2021+A16:2023,
2014/35/EU	Low Voltage Directive	EN IEC 61000-3-2:2019+A1:2021+A2:2024, EN IEC 55014-1:2021, EN IEC 55014-2:2021,
2011/65/EU	Restriction of Hazardous Substances (RoHS) Directive	EN 1596:1998/A1:2004, IEC 62321-3-1:2013, IEC 62321-7-1:2015, IEC 62321-7-2:2017

This declaration is issued, in accordance with legislation (EU) 2016/426, under the sole responsibility of the manufacturer.

The CE mark was first applied in: 2025

<b>Manufacturer:</b>	Clarke International Ltd, Fitzwilliam Hall, Fitzwilliam Place, Dublin 2, Republic of Ireland	<b>Notified Body:</b>	DBI Certification A/S (ID Number: 2531), Jernholmen 12, DK-2650 Hvidovre, Denmark
<b>Product Description:</b>	Gas Space Heater	<b>GAR Certificate Number:</b>	2531-GAR-CGC10360, 2531-GAR-CGC10088
<b>Model Number(s):</b>	DEVIL 500	<b>GAR Certificate Issue:</b>	07/12/2022, 19/04/2023
<b>Serial/Batch Number:</b>	Refer to product/packaging label	<b>GAR Certificate Expiry:</b>	13/06/2028, 21/04/2028
<b>Date of Issue:</b>	21/03/2025	<b>Signed:</b>	
			J.A Clarke Director

DEVIL 500 CE Clarke DOC 032125

Page 1 of 1

# A SELECTION FROM THE VAST RANGE OF

# Clarke®

## QUALITY PRODUCTS



**AIR COMPRESSORS**  
From DIY to industrial, Plus air tools, spray guns and accessories.

**GENERATORS**  
Prime duty or emergency standby for business, home and leisure.

**POWER WASHERS**  
Hot and cold, electric and engine driven - we have what you need

**WELDERS**  
Mig, Arc, Tig and Spot.  
From DIY to auto/industrial.

**METALWORKING**  
Drills, grinders and saws for DIY and professional use.

**WOODWORKING**  
Saws, sanders, lathes, mortisers and dust extraction.

**HYDRAULICS**  
Cranes, body repair kits, transmission jacks for all types of workshop use.

**WATER PUMPS**  
Submersible, electric and engine driven for DIY, agriculture and industry.

**POWERTOOLS**  
Angle grinders, cordless drill sets, saws and sanders.

**STARTERS/CHARGERS**  
All sizes for car and commercial use.



## PARTS & SERVICE:

## 0208 988 7400

**Parts Enquiries**  
[Parts@clarkeinternational.com](mailto:Parts@clarkeinternational.com)

**Servicing & Technical Enquiries**  
[Service@clarkeinternational.com](mailto:Service@clarkeinternational.com)

SALES: UK 01992 565333 or Export 00 44 (0)1992 565335

**Clarke® INTERNATIONAL** Hemnall Street, Epping, Essex CM16 4LG  
[www.clarkeinternational.com](http://www.clarkeinternational.com)